

# Accessories for fraud preventing aerial cable

## Protection



### Application

This cutout sleeve makes it possible to secure the connection of the phase conductor and to protect the installation against electrical faults that may occur during illegal connections on the concentric cable. This cutout sleeve can receive a 22x58 fuse up to 100A or a neutral tube.

### Description

- The cutout sleeve is installed on the customer service conductor.
- The sleeve uses insulation piercing technology.
- The sleeve receives 6-35mm<sup>2</sup> Al/Cu insulated conductor on both sides.
- At the opening of the sleeve, the elastic tightening of the cartridge ensures that this fuse remains on the customer side, out of potential.
- The single tightening is ensured by two shear head screws sealable after breaking.
- The sleeve has a very good resistance to climatic conditions (humidity, temperature...).
- The cutout function is sealable.

This sleeve meets the criteria of ErDF French **specification 69 40 070**.

Code	Designation	Weight (kg)	Sales unit
K221	CUTOUT SLEEVE 63A (22x58) PIERCING 6-35	0.235	50

SEE SHEET  
ACCESS TO ENERGY/Protection/Fuses

## Connection



MICHAUD Exclusivity



### Application

This fraud preventing connector is used to make a tap connection between aerial networks. Once implemented, this connector cannot be dismantled.

Code	Designation	Weight (kg)	Sales unit
K325	IPC FRAUD PREVENTING	0.120	12

## Mechanical fixing



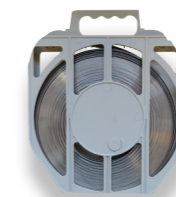
### Application

These accessories allow the concentric cable to be anchored both at the top of the pole and at the foot of the meter. The anchoring clamp **U508** is made for single and three-phase cable whereas the anchoring clamp **K310** is made only for single-phase cable.

Code	Designation	Weight (kg)	Sales unit
K310	ANCHORING CLAMP CONCENTRIC CABLE SINGLE PHASE	0.100	25
U508	ANCHORING CLAMP CONCENTRIC CABLE THREE-PHASE	0.180	1
L304	FIXING CLAMP - PF25	0.010	100
F305	MULTIPLE ANCHORING BRACKET - CAM 25	0.220	100

### Option:

Stainless steel strap is available for the mechanical fixing on a pole.



SEE SHEET  
ACCESS TO ENERGY / Distribution / Tape

